

March 2022

Rediscovering Lancaster

A photo journal

Hannah Cai





The AMISH VILLAGE



SOUTHERN END
TREE SERVICE
717.943.2794
treeandshrubprogramsavailable.com
TREE & SHRUB
PROGRAMS AVAILABLE
TREATMENTS



Ephrata Cloister











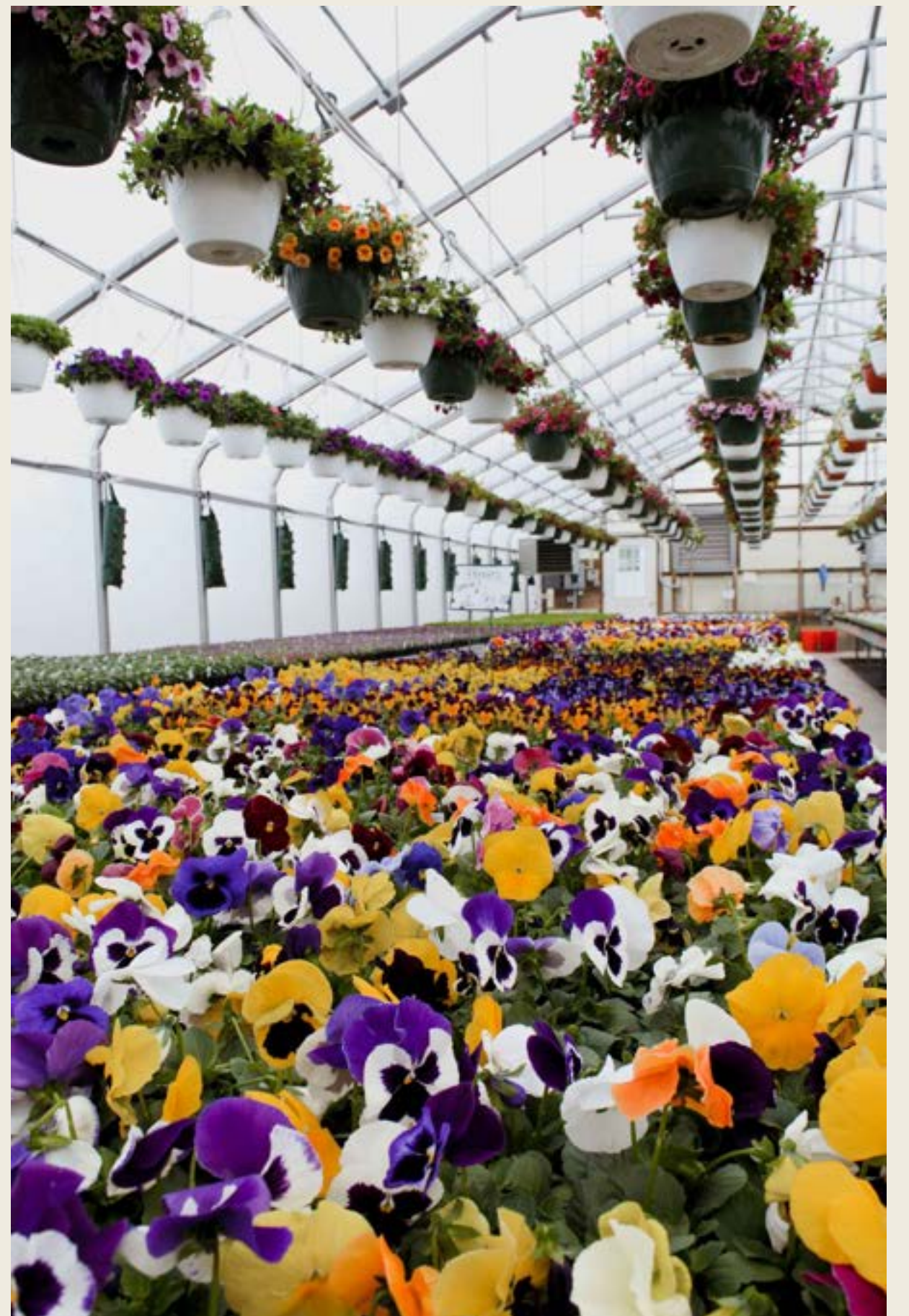








Hoover's Farm & Greenhouse
(Her happy place...we visited twice)





Violas
Special!
2 / \$5.00

Pansies
Special!
2 / \$5.00





We went to Agapē for dinner...we returned for the goats next door.

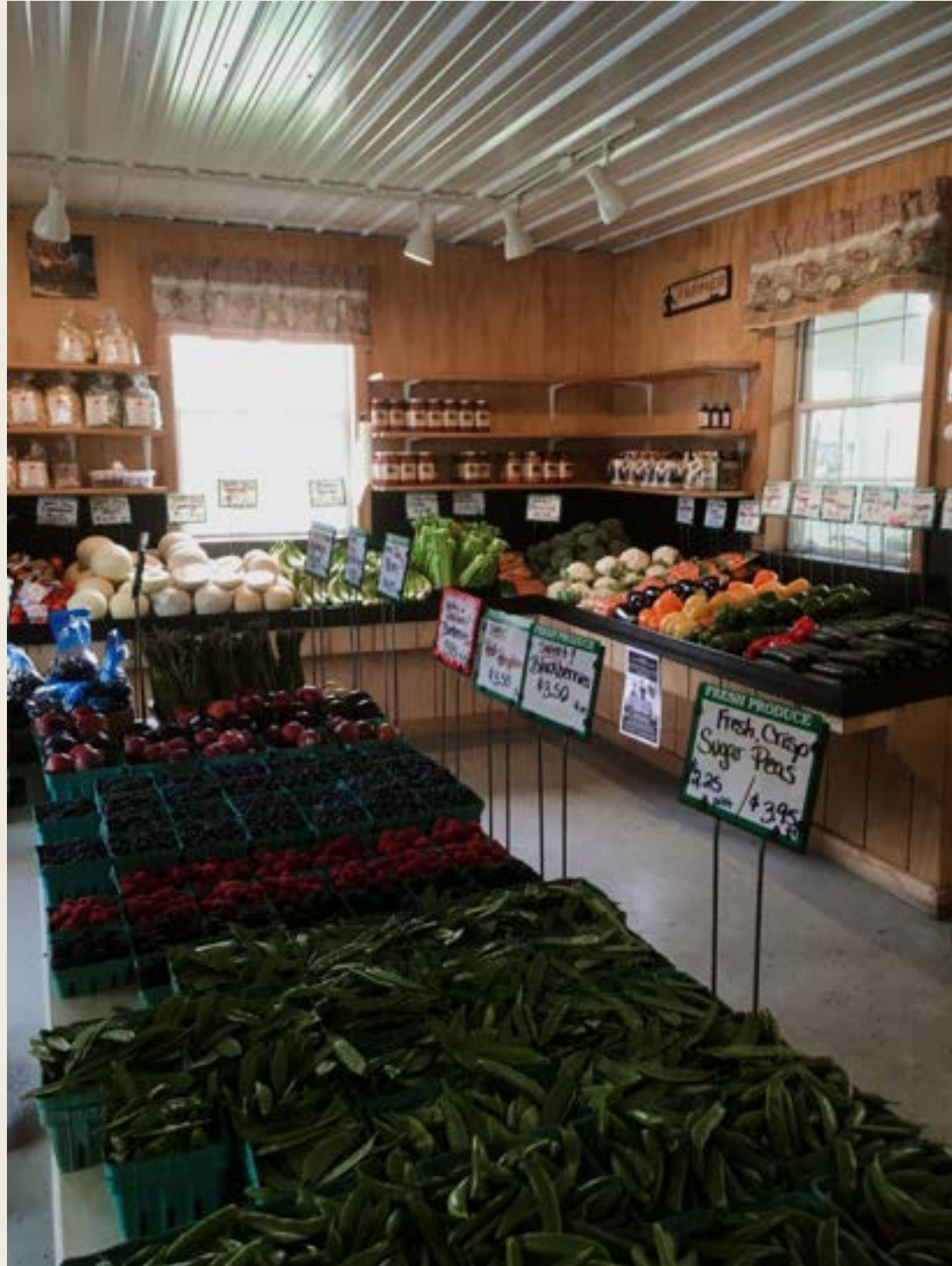




Happy



Lanc happy



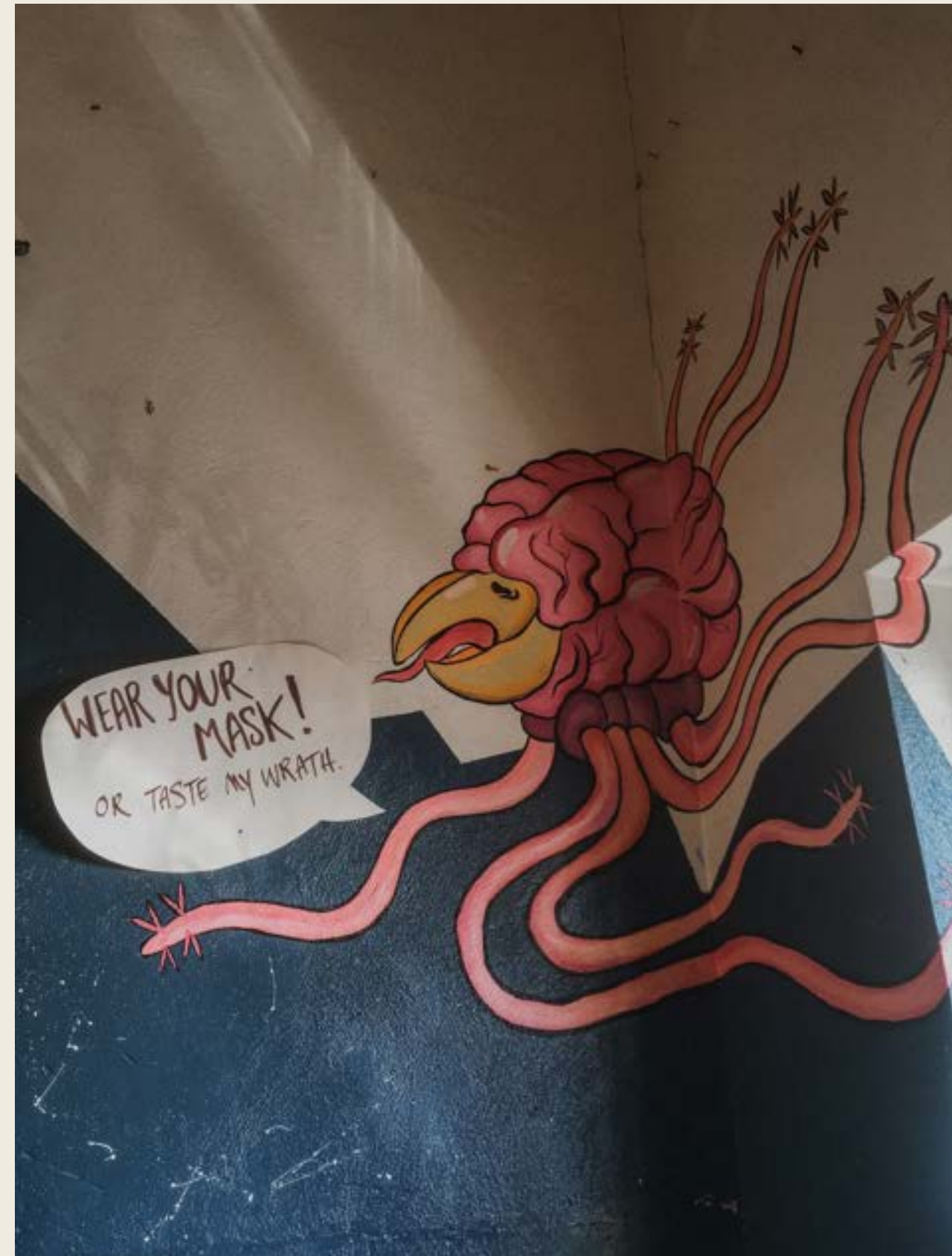
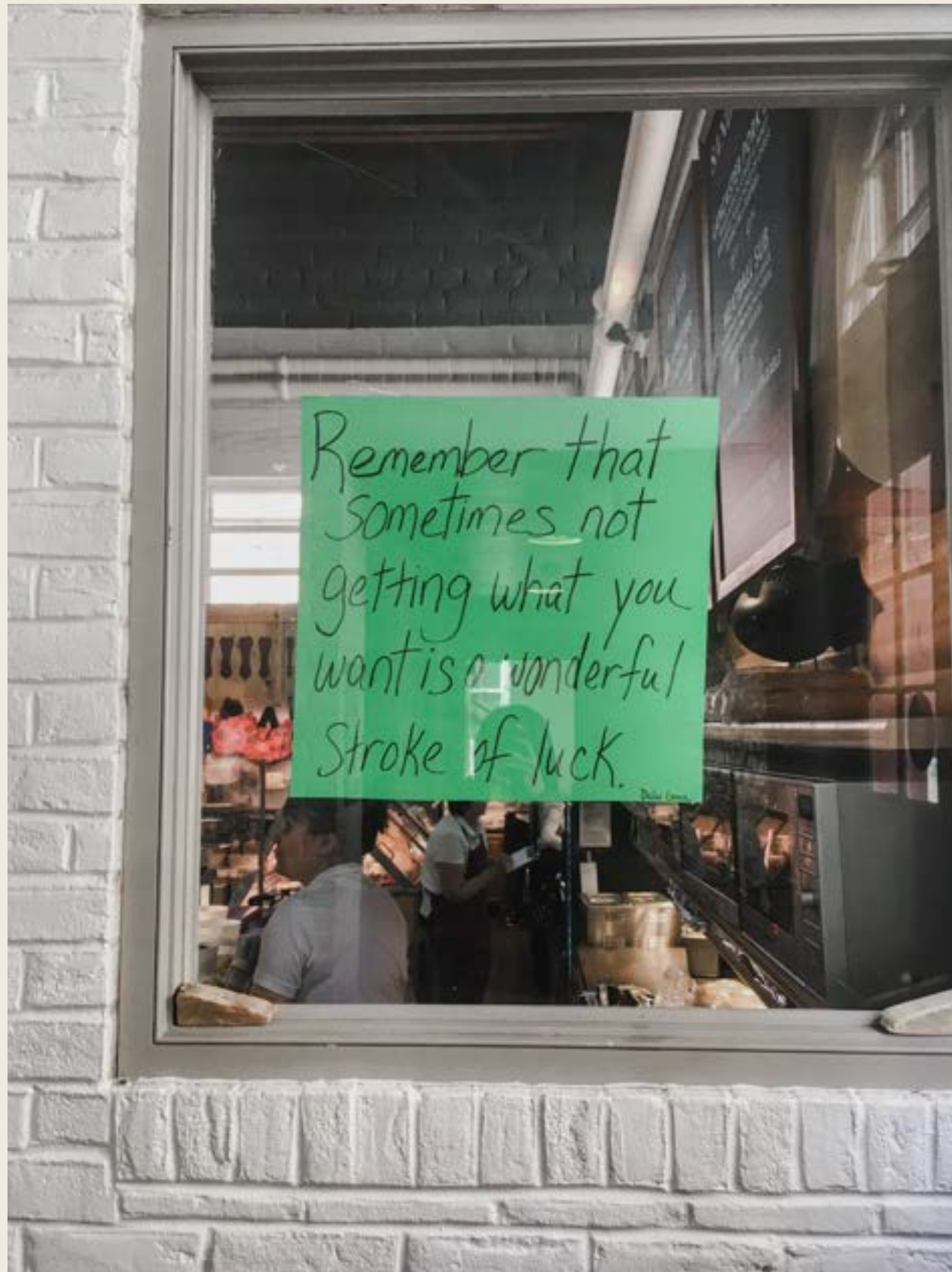


Downtown Ephrata



Lancaster City



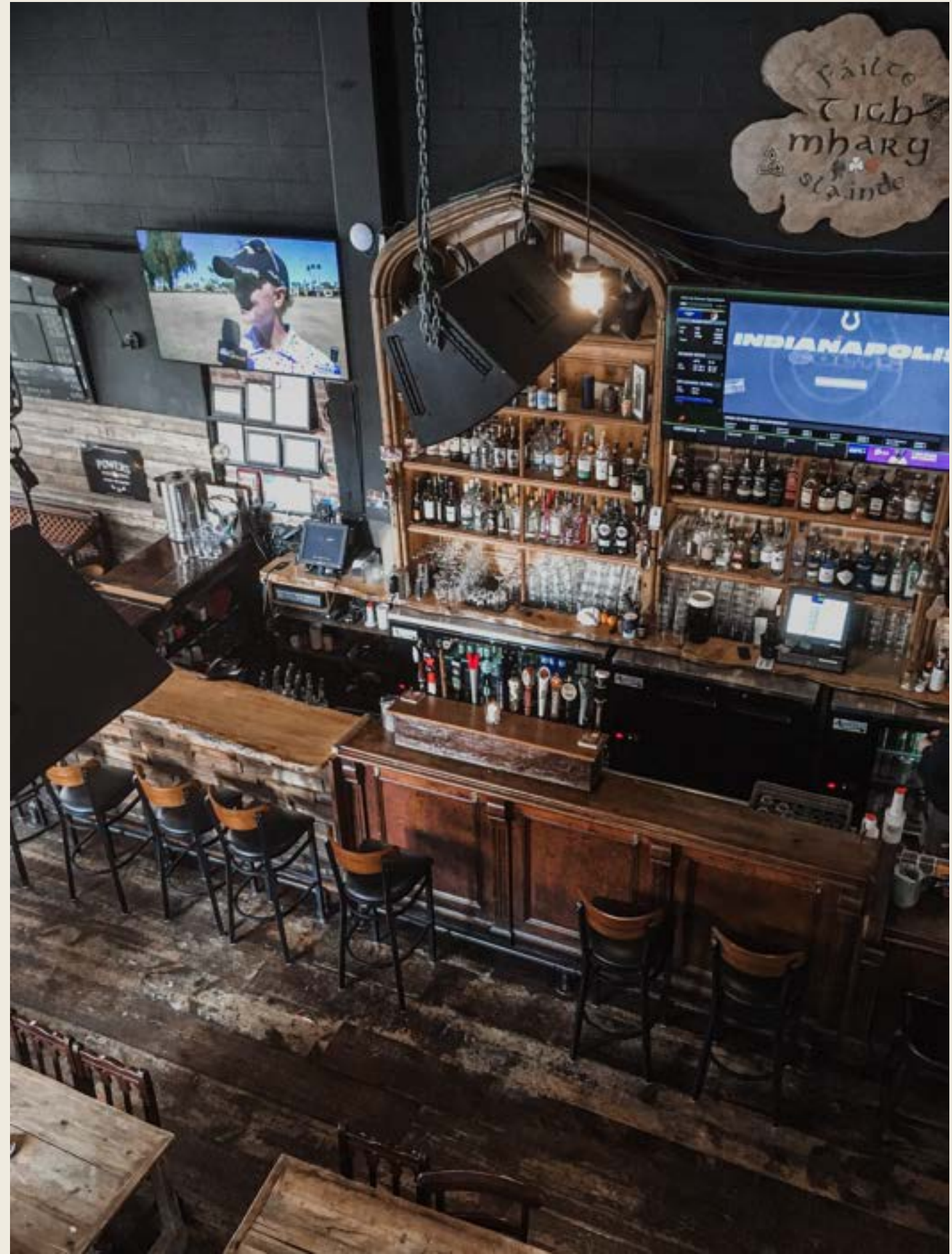


Lancaster Central Market



Nook Books and Curio. Gallery Art & Supply

These paints are hand made by a First Nations woman in Canada and sold in upcycled pieces of wood and plastic.





Take a second look







Other places to visit in Lancaster:

- *Central Market*
 - *Gallery Row*
 - *The city of Litiz (Julius Sturgis Pretzel Bakery, Wilbur Chocolate Factory for their triple coated almonds)*
 - *Sight and Sound Theater*
 - *Strasburg Rail Road*
 - *Agapē's sister store, Beautiful Home Interiors*
 - *As many thrift stores as you can step into (they are very well organized and the items are priced what you'd expect from a thrift store)*
 - *Wolf Sanctuary of PA*
 - *Cherry Crest Adventure Farm*
-



Thanks for following along!

hannahclaudia.blogspot.com